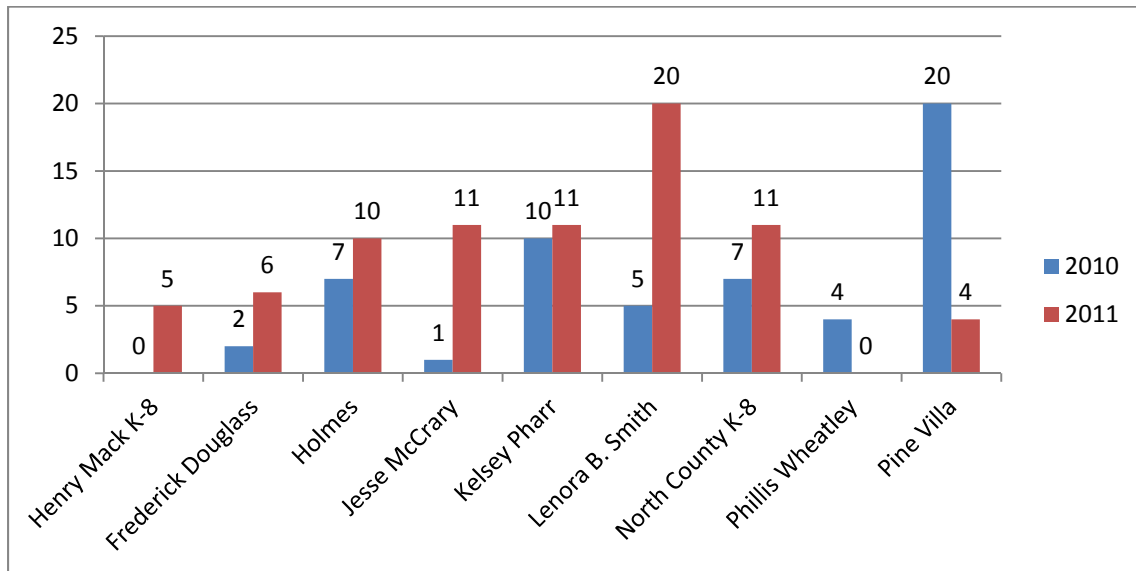
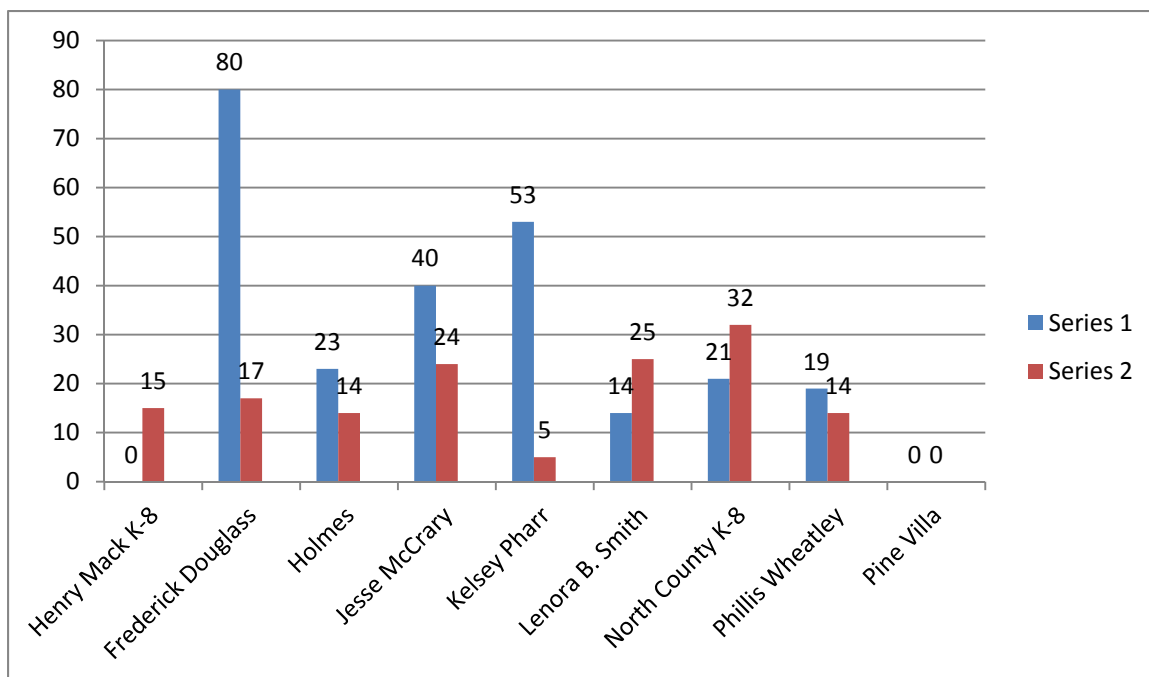


**Baseline Writing Assessment
% of Students Scoring at 4.0 and Above
Elementary Schools**

Expository

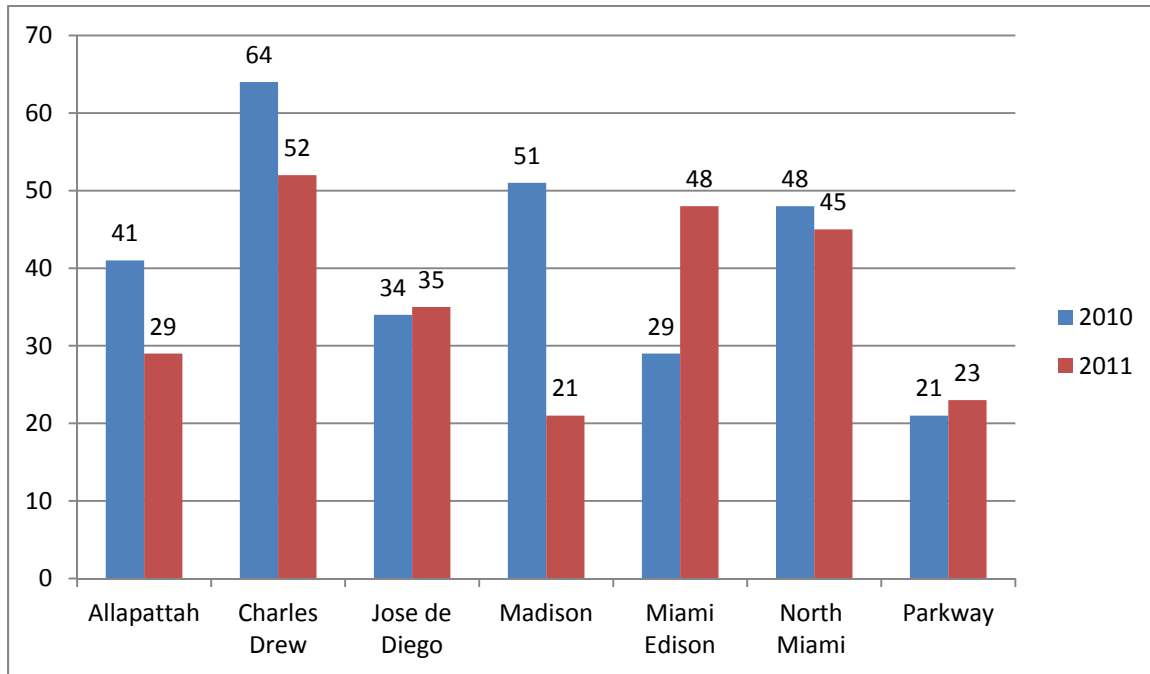


Narrative

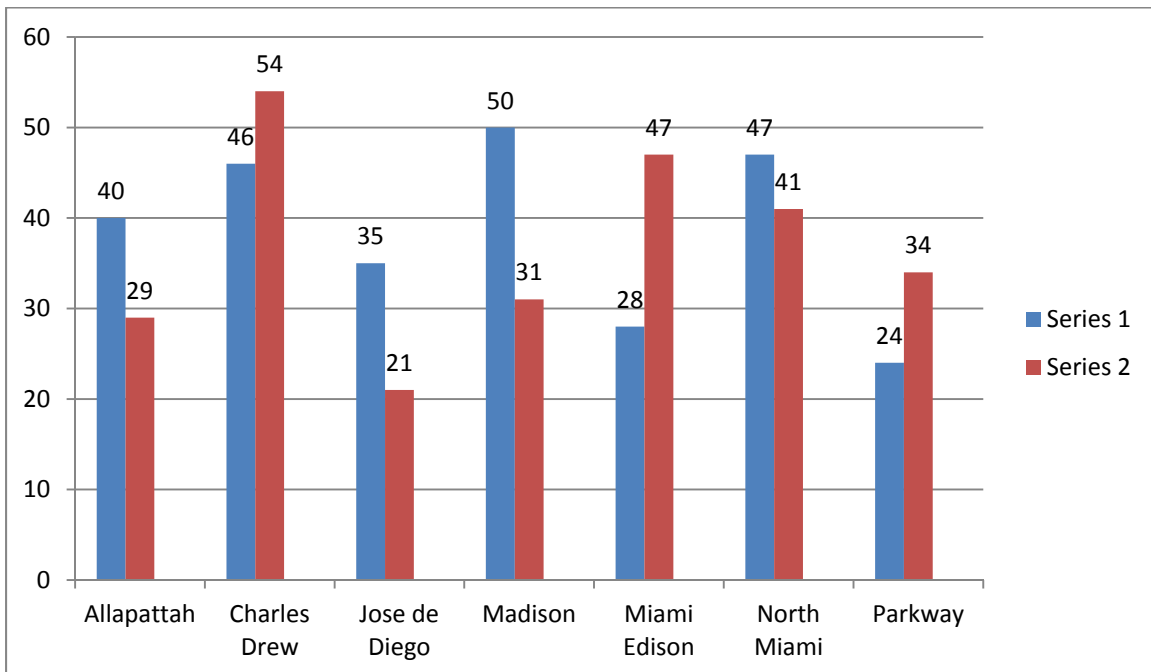


**Baseline Writing Assessment
% of Students Scoring at 4.0 and Above
Middle Schools**

Expository

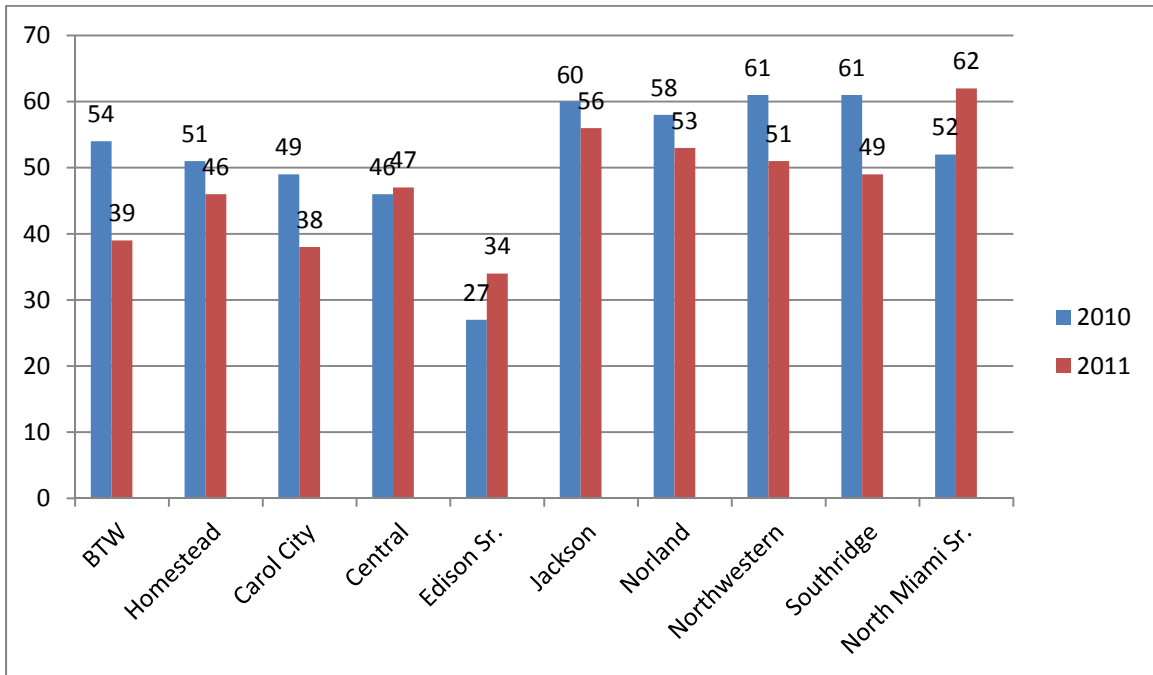


Persuasive



**Baseline Writing Assessment
% of Students Scoring at 4.0 and Above
High Schools**

Expository



Persuasive

